



DOGGER BANK
TEESSIDE

May 2012

Statement of Community Consultation (SoCC) Consultation Documents

<h1 style="text-align: center;">Statement of Community Consultation (SoCC) Consultation Documents</h1>		
Document no. :	Contract no. (if applicable):	Project: Dogger Bank Teesside
Classification: Public	Distribution: Public	
Expiry date (if applicable):	Status: Final	
Date: May 2012	Version no.: 1	
<p>Overview:</p> <p>This document provides further information on the content of the Statement of Community Consultation (SoCC) and how the local community associated with Dogger Bank Teesside was determined.</p>		
Prepared by: Forewind	Date: April 2012	Signature: 
Approved by: Forewind	Date: May 2012	Signature: 

Contents

1 Policy context.....	6
2 Project overview.....	8
Background	8
The study area and project components	9
Offshore project components.....	10
Onshore project components.....	10
3 The Statement of Community Consultation	12
Scope of the SoCC	12
Consultation on the content of the SoCC	12
Making the SoCC available for public inspection.....	13
4 The community consultation process	16
Objectives.....	16
Phases of consultation	16
Defining ‘the vicinity’ of the project	17
How we will consult	21
5 What we will do with the consultation	24
6 Consultation summary	25
Summary of consultation activities in Phase One.....	25
Summary of consultation activities in Phase Two.....	25
7 Further information.....	26
Appendix A: Statement of Community Consultation (SoCC)	27

Table of tables

Table 1	Authorities that have been consulted on the content of the SoCC	13
Table 2	Locations where the SoCC will be made available for public inspection.	14
Table 3	Publications in which Forewind proposes to publish the SoCC.....	15

Table of figures

Figure 1	Dogger Bank Teesside Scoping Envelope.....	9
Figure 2	The Dogger Bank Teesside Consultation Area	19

Glossary of abbreviations

AC – Alternating current

DC – Direct current

DCLG – Department for Communities
and Local Government

DCO – Development Consent Order

EIA – Environmental impact
assessment

EMF – Electro-magnetic field

EU – European Union

GW – Gigawatt

ha - Hectare

HVAC – High voltage alternating
current

HVDC – High voltage direct current

IPC – Infrastructure Planning
Commission

km – Kilometre

km² – Square kilometre

m - metre

MHWS – Mean high water springs

MMO – Marine Management
Organisation

MW – Megawatt

NID – National Infrastructure
Directorate

NPS – National Policy Statement

NSIP – Nationally Significant
Infrastructure Project

PEI – Preliminary Environmental
Information

SoCC – Statement of Community
Consultation

SoS – Secretary of State for Energy
and Climate Change

StEP – Stakeholder Engagement Plan

TWh – Tera Watt hour

UK – United Kingdom

WTG – Wind turbing generator

ZoC – Zonal characterisation

1 Policy context

- 1.1 Forewind Ltd (Forewind) is promoting the Dogger Bank Teesside offshore wind farm development. The development could comprise up to four offshore wind farm projects, each with a generating capacity of up to 1.2Gigawatts (GW). Therefore, the development could have a total generating capacity of up to 4.8GW.
- 1.2 Offshore wind farms with a capacity over 100 Megawatts (MW), are classified as Nationally Significant Infrastructure Projects (NSIPs) under Section 14 of the Planning Act 2008 and require a Development Consent Order (DCO) before they can be built. Under current legislation, the National Infrastructure Directorate of the Planning Inspectorate(NID) is responsible for examining applications for DCOs and for making a recommendation to the relevant Secretary of State as to whether development consent should be granted or refused. The Secretary of State will then determine the application. Therefore, Forewind will submit its applications for DCOs to the NID and the Secretary of State for Energy and Climate Change will determine the applications.
- 1.3 Due to the scale of Dogger Bank Teesside, Forewind may decide to submit either one application for a DCO for the entirety of the up to 4.8GW development, or up to four separate DCO applications. Each application will request consent to construct and operate both the offshore and onshore elements of that project.
- 1.4 The Planning Act places a statutory duty on Forewind to consult with the community in the vicinity of the projects and to consider the responses received. Forewind has decided to consult the community on the largest possible scale of Dogger Bank Teesside, even though it may end up being the subject of up to four separate applications for DCOs. This approach is intended to provide clarity and to be transparent on the full scale of the Dogger Bank development that may affect this community.It also streamlines the process for stakeholders in terms of time commitment and gives them the option to provide their comments on all or any of the project proposals, as they feel appropriate.
- 1.5 It is important that the local community is involved in the consultation and that individuals and groups make their views known, so that issues can be better understood and resolved where possible.
- 1.6 The Statement of Community Consultation (SoCC) is a formal requirement of the Planning Act which sets out how the community will be consulted.
- 1.7 This document – The SoCC Consultation Document - has been produced to provide supporting information for the Local Authority (Redcar and Cleveland Borough Council) during its formal review of Forewind's proposed SoCC, in accordance with Section 47(2) of the Planning Act. In line with guidance published by the Department

for Communities and Local Government (DCLG), Forewind is also consulting the Marine Management Organisation (MMO) on the proposed content of the SoCC.

- 1.8 Therefore, this document comprises the 'Consultation Documents' defined under Section 47(3) and (4) of the Planning Act in relation to Forewind's duty to prepare a SoCC for Dogger Bank Teesside.

2 Project overview

Background

- 2.1 In 2010, the development company Forewind was awarded the exclusive right to develop offshore wind farm projects at the Dogger Bank Zone through the third round of offshore wind farm leasing undertaken by The Crown Estate.
- 2.2 The Dogger Bank Zone is located within the UK's Renewable Energy Zone in the North Sea, and is between 156 and 310 kilometres (km) off the Teesside coast. It extends over an area of approximately 8,660 km² (approximately the same size as North Yorkshire) with its eastern most outer limit aligned to the UK continental shelf, as defined by the UK Hydrographic Office. The water depth ranges from 18 to 63 metres (m).
- 2.3 Forewind has committed to developing 9GW of wind generation capacity at Dogger Bank but believes that the Zone has the potential to accommodate approximately 13GW. If built to this capacity, the Dogger Bank Zone would be the largest offshore wind farm development in the world and would be capable of supplying up to 10 per cent of the UK's electricity demand. To relieve the pressure on stakeholders and the supply chain, the Zone will be developed in a series of up to 11 wind farms.
- 2.4 The first stage of the Dogger Bank development is called Dogger Bank Creyke Beck. It will have a generating capacity of up to 2.4GW and will connect into the national grid at the Creyke Beck substation near Cottingham in the East Riding of Yorkshire. Forewind is consulting the local community relevant to this project; for more details, please download the Dogger Bank Creyke Beck SoCC from the Forewind website: www.forewind.co.uk/projects/01-creyke-beck/consultation
- 2.5 Dogger Bank Teesside is the second stage of Forewind's development of the Dogger Bank Zone. It will comprise up to four wind farms, each with an installed capacity of up to 1.2GW, which are expected to connect to the national grid in Teesside, just south of the Tees Estuary. Therefore, Dogger Bank Teesside could have a total installed capacity of up to 4.8GW, with the potential to generate almost 17 Tera Watt Hours (TWh) of green power every year. That is equivalent to the electricity used annually by a total of approximately 3.6 million British homes¹.
- 2.6 Forewind currently expects that at least two of the Dogger Bank Teesside projects will connect to the existing Lackenby Substation, which is near Eston, and that the other two projects will connect into a new substation, which National Grid will build to upgrade an existing facility in Teesside. It is not yet known where this new substation will be located, but it is likely to be in Teesside.

¹ This figure assumes a 40% capacity factor and an average British home electricity consumption of 4.7 MWh per annum

- 2.7 Forewind is in close communication with National Grid on the siting of the new substation to ensure that our respective site selection processes are aligned.
- 2.8 The entirety of the 4.8GW Dogger Bank Teesside proposal will be presented to stakeholders during consultation in order to:
- Minimise the consultation burden by not repeating consultation on a number of very similar individual proposals;
 - Provide clarity on the largest possible scale of the works that might be carried out in the area; and
 - Give stakeholders the opportunity to provide their comments on all or any of the project proposals as they wish.

The study area and project components

- 2.9 Forewind has identified a broad study area (the Scoping Envelope) in which Dogger Bank Teesside will be located and this is shown in Figure 1. The actual area that the project will occupy will be much smaller than the Scoping Envelope. Forewind has identified the appropriate Local Authority to consult on the development on this basis, namely Redcar and Cleveland Borough Council.

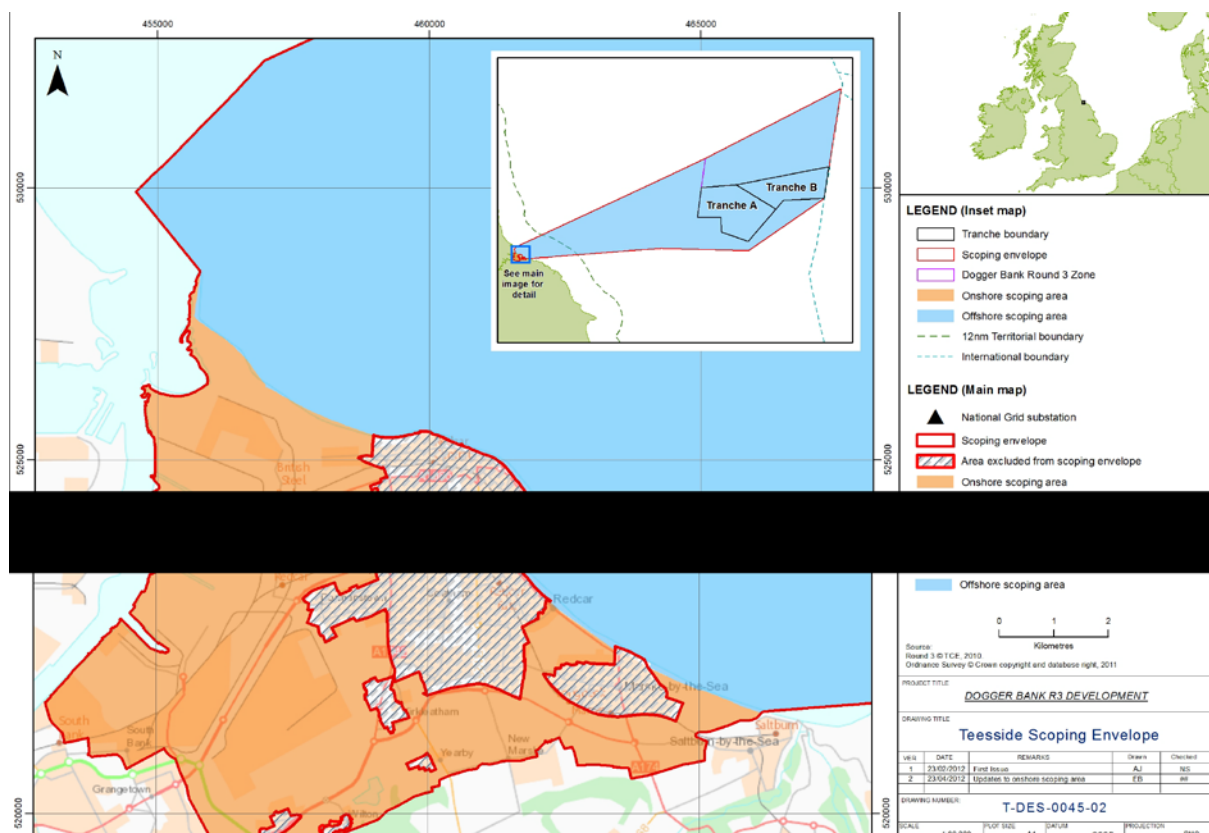


Figure 1 Dogger Bank Teesside Scoping Envelope

- 2.10 There are two key elements of the development: the offshore works and the onshore works. For the purposes of this document, offshore means any point on the seaward side of the point the export cables come to shore (the landfall) and comprises the blue section in Figure 1.

Offshore project components

- 2.11 The offshore works comprise not only the offshore wind farms, but also a range of associated development needed for the operation of the wind farms. This includes:
- Offshore alternating current (AC) cabling between the offshore wind turbine generators (inter-array cables);
 - Offshore collector stations and offshore AC to direct current (DC) converter stations including foundations and scour protection measures;
 - Offshore operations and maintenance infrastructure, including accommodation platforms;
 - Permanent moorings, navigational buoys and scour protection measures;
 - Offshore high voltage DC (HVDC) export cables, from the offshore converter stations to the UK coastline, or possibly adjacent projects;
 - Crossing structures at the points where project cables cross existing subsea cables and pipelines; and
 - Offshore meteorological masts and metocean equipment.

Onshore project components

- 2.12 The onshore works include:
- HVDC cables buried below the foreshore;
 - Onshore buried cable joints at the landfall where the offshore export cables come onshore and join the onshore HVDC cables;
 - Underground HVDC cable system - from the landfall to the onshore HVDC to HVAC converter stations;
 - Ancillary cable ducts (if installed) - these are buried ducts running adjacent to the cable systems;
 - Up to four onshore HVDC to HVAC converter stations which could be up to 30m in height and will require a combined permanent land take of up to 18 hectares. The converter stations could be located together or split over up to four sites. Additional land would be required on a temporary basis for construction; and
 - Underground HVAC cables from the onshore converter stations to the National Grid substation/s.
- 2.13 The electricity generated by Dogger Bank Teesside will connect to the national high-voltage electricity transmission network, the national grid. The national grid is operated by the company National Grid, which is responsible for developing and maintaining an efficient, co-ordinated and economical electricity transmission

network. This includes determining where it is appropriate for power generation projects such as Dogger Bank Teesside to connect to the network.

- 2.14 National Grid may need to carry out works at Lackenby Substation in order to connect Dogger Bank Teesside. National Grid is also responsible for identifying the site for the new substation that will upgrade the existing facility in Teesside. Consenting, construction and operation of all these works will be the responsibility of National Grid; however Forewind will endeavour to provide details of any such works during the consultation process to help the local community understand the full impact of Dogger Bank Teesside.
- 2.15 Infrastructure improvements may be needed to local port facilities in order to support the construction, operation and decommissioning of Dogger Bank Teesside. This will not be part of the Dogger Bank Teesside application/s.
- 2.16 Further detail on Dogger Bank Teesside is available on the project website at www.forewind.co.uk.

3 The Statement of Community Consultation

Scope of the SoCC

- 3.1 The Statement of Community Consultation (SoCC) (see Appendix A) is a formal requirement of the Planning Act that sets out how Forewind will consult with the local community.
- 3.2 In parallel with the consultation undertaken with the local community, Forewind will engage with the local, national and international fishing communities to ensure that they are kept up to date with the development and are also given an opportunity to provide comments on the proposal. Details of this consultation process have been published separately in Forewind's Fisheries Liaison Plan which is available to download from the Forewind website <http://www.forewind.co.uk/downloads/zone.html>
- 3.3 Forewind will work with the NID and the relevant EU governments to ensure that appropriate international stakeholders are consulted. Statutory consultees, the Local Authorities, landowners and tenants will also be consulted in accordance with section 42 of the Planning Act. Further details are provided in Forewind's Stakeholder Engagement Plan (StEP) which is available to download from the Forewind website <http://www.forewind.co.uk/downloads/zone.html>

Consultation on the content of the SoCC

- 3.4 The format and content of the SoCC, which is included in Appendix A, shows how Forewind proposes to communicate a clear, informative and comprehensive statement to the various communities on how it will consult them.
- 3.5 Redcar and Cleveland Borough Council is being consulted on the proposed content of the SoCC, as it is the Local Authority within which the "land" lies in relation to Dogger Bank Teesside. In accordance with DCLG guidance, Forewind has also sought the views of the MMO on the offshore elements of the wind farm consultation strategy.
- 3.6 In line with IPC Guidance Note 1, Forewind has supplied Redcar and Cleveland Council and the MMO with the following preliminary environmental information (PEI) at the time of consulting on the SoCC:
 - The Dogger Bank Zonal Characterisation Report (ZoC) and the March 2012 update to the Dogger Bank ZoC;
 - The Tranche A Selection Report; and
 - A map showing the community consultation boundary in relation to the proposed Scoping Envelope.

- 3.7 The authorities that have received this document are listed in Table 1, along with the potential impact to communities within their boundaries.

Table 1 Authorities that have been consulted on the content of the SoCC

Authority	Potential Impact
Redcar and Cleveland Borough Council (Statutory consultee to this document under Section 47 of the Planning Act)	<ul style="list-style-type: none"> • Potential impacts associated with the construction, operation and decommissioning of the converter station(s) and onshore cables routes connecting to offshore cables • Potential impacts associated with the construction, operation and decommissioning of offshore cables as they come close to the shore • Potential impacts on sea users within (e.g. fishermen, recreational sailors)
Marine Management Organisation (MMO)	<ul style="list-style-type: none"> • Impacts due to operations associated with the construction, operation and decommissioning of components below mean high water springs (MHWS)

Making the SoCC available for public inspection

- 3.8 Section 47(6) of the Planning Act as amended by the Localism Act 2011 requires that:

Once the applicant has prepared the statement, the applicant must -
(za) make the statement available for inspection by the public in a way that is reasonably convenient for people living in the vicinity of the land,
(a) publish, in a newspaper circulating in the vicinity of the land, a notice stating where and when the statement can be inspected and
(b) publish the statement in such manner as may be prescribed.

- 3.9 Hard copies of the SoCC will be made available at the Council libraries and other appropriate Redcar and Cleveland Council buildings listed in Table 2. It will also be available to download from the Forewind website www.forewind.co.uk.

Table 2 Locations where the SoCC will be made available for public inspection

Venue	Address	Post Code
Grangetown Library	171 Birchington Avenue, Middlesbrough	TS6 7LP
Kirkleatham Museum	Redcar	TS10 5NW
Laburnum Road Library	Laburnum Road, Redcar	TS10 3QS
Marske Library	Windy Hill Lane, Marske	TS11 7BL
Mobile Library	For details of routes and timetables, please refer to http://www.redcar-cleveland.gov.uk or call Redcar Central Library on 01642 472162 or the Mobile Library on 07909 906 324	
Redcar Central Library	Redcar and Cleveland House, Kirkleatham Street, Redcar	TS10 1RT
Roseberry Library	Roseberry Road, Redcar	TS10 4NY
Saltburn Library	Windsor Road, Saltburn-by-the-Sea	TS12 1AT
The Wilton Centre	Wilton, Redcar	TS10 4RF

- 3.10 Forewind proposes to publish a single issue notification stating where and when the SoCC for Dogger Bank Teesside can be inspected, in the publications shown in Table 3.
- 3.11 The publications proposed are intended to capture the communities affected by both the offshore works and the onshore works.

Table 3 Publications in which Forewind proposes to publish the SoCC

Publication	Distribution	Purpose
Middlesbrough Evening Gazette	Regional daily evening newspaper. Extensive coverage over the consultation area and beyond to Whitby, Northallerton, Darlington and Hartlepool	One of the biggest selling local, daily newspaper in the area. To reach community consultees and the extended local community who buy a daily newspaper
Coastal View & Moor News	Free community newspaper. Redcar, East Cleveland and the North York Moors	To reach those in the consultation area who do not buy a newspaper
The East Cleveland Herald & Post	Weekly free newspaper. Redcar, Marske-by-the-Sea, New Marske, Saltburn-by-the - Sea, Lazenby, Eston, Wilton	To reach those in the consultation area who do not buy a newspaper
Fishing News	Commercial fishing industry	To capture offshore users notable those commercial fishing interests that may use the Dogger Bank Zone

- 3.12 In addition, a link to the online version of the SoCC will be published in the Kingfisher Bulletin which is distributed as an electronic newsletter to mariners. It is not possible to publish the full notification in the Kingfisher Bulletin due to constraints on space.

4 The community consultation process

Objectives

- 4.1 The objectives of the Dogger Bank Teesside community consultation are to:
- Provide information to all sections of the relevant communities in a clear and concise way;
 - Create a process through which local people can comment on the proposal and provide Forewind with information relevant to the proposal;
 - Ensure that Forewind understands the views of the local community in order that they can be considered during the development process; and
 - Provide feedback on how community consultation has influenced the proposal.

Phases of consultation

- 4.2 Guidance from the Department for Communities and Local Government (DCLG) on pre-application consultation states that:

“consultation must happen at a sufficiently early stage to allow consultees a real opportunity to influence the proposals.”

- 4.3 Following early discussions with Redcar and Cleveland Borough Council, Forewind has determined that it is appropriate to undertake a two-phase consultation with the local community for Dogger Bank Teesside. These phases are described below.

Phase One – the site selection process to date

- 4.4 This is an early stage consultation which is intended to introduce Forewind and Dogger Bank Teesside to the local community, and to request early feedback and comments on the proposal.
- 4.5 Forewind recognises that the local community may be aware of issues and have valuable information about the area within the Scoping Envelope, and that they will have preferences about the location of the infrastructure or the way that it is constructed. Forewind is committed to considering this information in the development of Dogger Bank Teesside.
- 4.6 During this phase, Forewind will present the Scoping Envelope and the preferred locations for the onshore and offshore infrastructure for Dogger Bank Teesside. This will include:
- Tranche A and Tranche B – the offshore areas in the Dogger Bank Zone that Forewind proposes to site the majority of the Dogger Bank Teesside wind turbine generators and some of the associated offshore infrastructure;

- A preferred cable landfall area;
 - A number of preferred sites for the onshore converter stations.
- 4.7 An indicative cable corridor will be presented during this phase of consultation, but this will not have been assessed to the same level of detail as the cable landfall area and onshore converter station sites, and therefore will be quite broad.
- 4.8 Preliminary Environmental Information (PEI) will be made available during this phase. This will consist of:
- Non-technical summary of Dogger Bank Teesside Preliminary Environmental Information 1 (PEI1);
 - Appendix A – The Project Description;
 - Appendix B – The Dogger Bank Teesside Environmental Impact Assessment Scoping Report (The Scoping Report); and
 - Appendix C – The Landfall and Converter Station Site Selection Report.

Phase Two – full details of the project

- 4.9 Having considered the results of the Phase One consultation and further developed the project and PEI, Forewind will move to Phase Two of the consultation process. This will involve setting out the detail of the offshore and onshore proposals for Dogger Bank Teesside and consulting the local community.
- 4.10 Prior to this stage, Forewind will inform the local community whether one single application will be made for a DCO for the entirety of Dogger Bank Teesside, or whether a number of separate applications will be submitted. If Dogger Bank Teesside is to be consented as separate applications, Forewind will explain how the consultation responses received to date will apply to each application going forwards.

Defining ‘the vicinity’ of the project

- 4.11 A key requirement of the guidance from the DCLG is for developers to establish the appropriate “vicinity” of the project in which to consult and this is an important focus of this document. The level of consultation in each area seeks to be appropriate to the potential impacts of the scheme at those locations.
- 4.12 Guidance from the DCLG states that:

“In most communities promoters will need to strike a balance between consulting those who are significantly affected by proposals (i.e. those identified in Section 42 of the Act) and consulting a wider group of local people who will not be directly affected, but who will have a reasonable fear that they might be, or will have strong feelings about a project. This second category may include people who live in the proximity of the development, but not close

enough to be physically affected by it, people who are likely to be affected by wider impacts of the development, or who are users of, or visitors to the area.”

4.13 Furthermore the guidance states that:

“We also recognise that, whilst consultation should be thorough and effective, there will be a variety of possible approaches to discharging the requirements, and that consultation will need to be proportionate.”

4.14 The following section identifies how the ‘vicinity’ or Consultation Area for our consultation is derived based on the potential impacts of the different elements of the scheme.

The vicinity for the onshore works

4.15 The onshore converter stations and underground cable route may have a variety of different potential impacts, the primary examples of which are summarised below:

4.16 Onshore converter stations:

- Temporary noise, dust and air quality impacts during construction;
- Temporary visual impacts from construction equipment;
- Temporary impacts on watercourses;
- Temporary disruption during delivery of abnormal loads with large electrical equipment;
- Temporary impacts on traffic networks due to construction traffic;
- Permanent or semi-permanent visual impacts from the construction of new buildings and long-term removal of vegetation, or the time needed for new vegetation to grow;
- Permanent low frequency electro-magnetic field (EMF) considerations;
- Permanent operational noise;
- Permanent new access arrangements;
- Temporary employment opportunities during construction; and
- Permanent employment opportunities during the operation and maintenance of the converter stations.

4.17 Onshore cable route:

- Temporary noise, dust and air quality impacts during construction;
- Temporary visual impacts from construction equipment;
- Temporary impacts on watercourses during construction;
- Temporary impacts on traffic networks due to road crossings and construction traffic;
- Permanent or semi-permanent visual impacts from the removal of vegetation, or the time needed for new vegetation to grow;
- Temporary closure or disruption to public rights of way during construction; and
- Temporary employment opportunities during construction.

- 4.18 As the cables will be buried, the majority of the onshore cable route impacts would be temporary and are unlikely to have an impact over a significant distance. Permanent potential impacts are expected to be restricted to any permanent or semi-permanent visual impacts from the removal of vegetation. The indicative onshore cable corridor avoids the major residential areas of Redcar, Marske-by-the-Sea, New Marske, Kirkleatham and Lazenby and instead crosses open agricultural land.
- 4.19 All landowners directly affected by the preferred converter station sites and indicative cable corridor will be consulted directly in accordance with Section 42 of the Planning Act.
- 4.20 In light of the above, Forewind proposes that the Consultation Area should broadly match the Scoping Envelope, with an extension to the west to ensure that communities who may be affected by the visual impact of the converter stations are included, and with an extension of approximately 1km to the south to ensure that communities affected by the cable installation are included. For the avoidance of doubt, the residential areas of Redcar, Marske-by-the-Sea, Kirkleatham, Yearby, Lazenby and Wilton would also be included in the Consultation Area. The Consultation Area is shown in Figure 2.

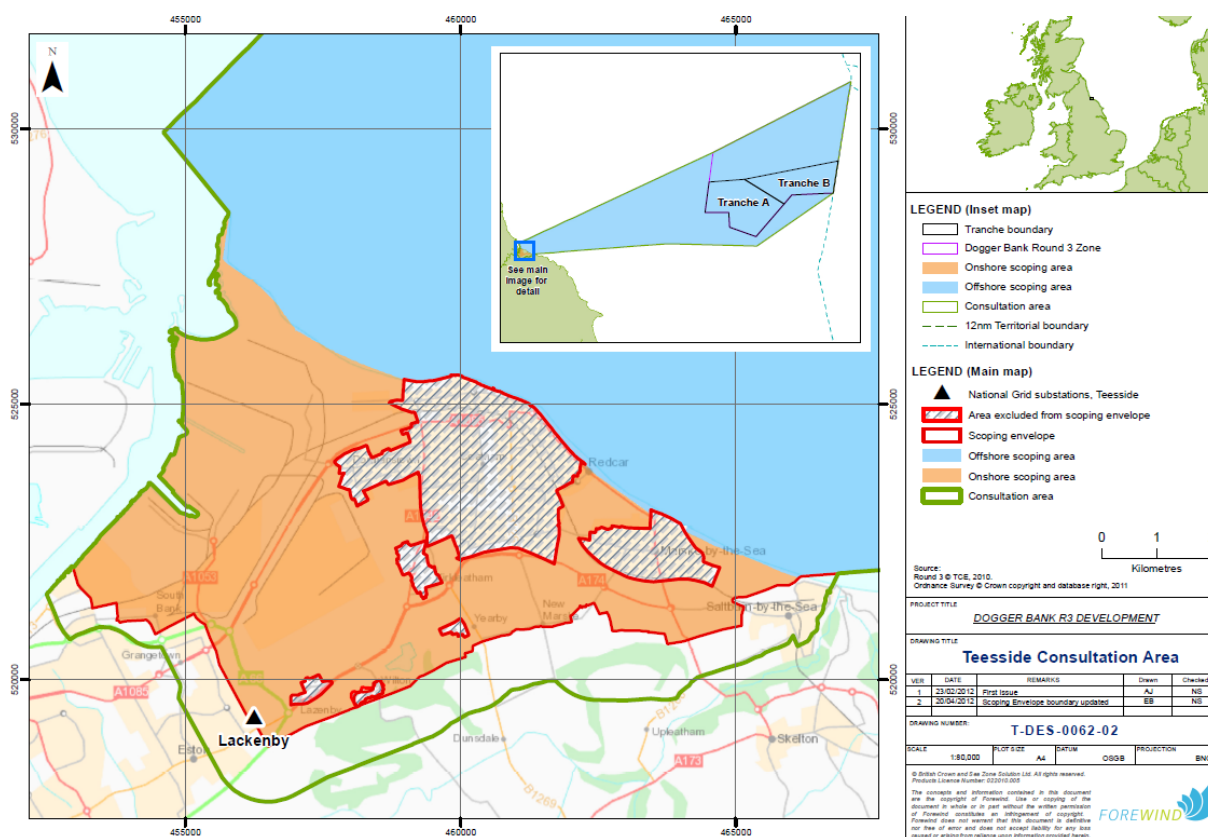


Figure 2 The Dogger Bank Teesside Consultation Area

- 4.21 Within the Consultation Area, Forewind will directly contact the following Community Consultees:
- Community groups or organisations with postal addresses in the Consultation Area, or who are active within the Consultation Area;
 - Parish councils wholly or partly within the Consultation Area;
 - District and county councillors with wards/divisions wholly or partly within the Consultation Area; and
 - Members of UK and European Parliaments with local constituencies wholly or partly within the Consultation Area.
- 4.22 Local residents and businesses will not receive direct postal communications from Forewind unless they specifically request this from Forewind. Forewind will ensure that the public exhibitions are well advertised (as described below) and will encourage residents and businesses to register their interest in being added to Forewind's electronic mailing list for project information and updates.

The vicinity for the offshore works

- 4.23 The construction and operation of the offshore wind farm, offshore converter stations and subsea cable route will have a variety of impacts, including but not limited to:
- Temporary noise during construction and decommissioning;
 - Temporary disturbance and redistribution of sediments during construction;
 - Temporary exclusion of other marine users during construction;
 - Temporary construction activity (exclusion, noise and visual impacts) on the landfall site;
 - Temporary construction vessel movement to and from the wind farm sites and cable route;
 - Temporary employment benefits during the construction and decommissioning periods;
 - Permanent limits or exclusions on movement through the wind farms;
 - Permanent regular movements of operational and maintenance vessels to and from the wind farms;
 - Permanent, very localised (at or in the seabed) low frequency Electro-Magnetic Field (EMF) considerations;
 - Permanent visual impacts of the offshore infrastructure;
 - Permanent employment benefits during the operation of the wind farm; and
 - Temporary or permanent effects on commercially important fish or shellfish species.
- 4.24 The majority of the above impacts will only affect sea-based users and the coastal residents nearest the subsea cable route and landfall, as the wind farm itself will be so far from shore. Forewind will endeavour to identify relevant organisations and/or community groups that represent recreational and commercial users of the sea and coastline within the Scoping Envelope to add to the database of Community

Consultees who will be contacted directly about the consultation events. For this reason, the Consultation Area boundary extends out to the Dogger Bank Zone.

- 4.25 Fishermen will be consulted in accordance with Forewind's Fisheries Liaison Plan and the majority of other marine users, such as shipping companies will be consulted directly as part of Forewind's Section 42 consultation process.
- 4.26 Stakeholders likely to be affected only by visual impact of the marine works during construction will be made aware of the consultation events via the general media.

Hard-to-reach groups

- 4.27 DCLG guidance notes that it is important for promoters to identify any hard-to-reach groups in the areas where consultation is occurring.
- 4.28 Redcar and Cleveland Borough Council's Statement of Community Involvement (June 2010) identifies that the key hard-to-reach groups in the region are young people, people with disabilities and ethnic minority groups. Redcar and Cleveland Borough Council has provided Forewind with lists of community groups from its Local Development Framework Consultee Database. Forewind has reviewed these lists to identify appropriate organisations that represent these hard-to-reach groups and has added them to Forewind's Community Consultee database.
- 4.29 In order to ensure that the consultation information is accessible to all, Forewind will endeavour to promote the consultation events on the local radio and local television, rather than relying solely on written advertisements. Staff will be available at the public exhibitions to explain the proposal in person and answer questions. Consultation responses can be submitted via the Freephone telephone number or in person at the public exhibitions. All the main consultation materials will be written in non-technical language.

How we will consult

- 4.30 Forewind will provide clear and concise information about the project and its impacts throughout the pre-application consultation process, to enable constructive debate to take place.

Public exhibitions

- 4.31 Public exhibitions will be held in a number of venues within or close to the Consultation Area. Informal consultation with Redcar and Cleveland Borough Council has identified that venues in or near Redcar, Marske-by-the-Sea, New Marske, Kirkleatham and Lazenby could be appropriate locations to hold public exhibitions.
- 4.32 A set of public exhibitions will be held during Phase One and a second set of public exhibitions will be held during Phase Two. Visitors to the exhibitions will be able to

review the PEI, factsheets and display boards, talk to members of the project team and complete questionnaires or take postage paid reply cards to respond after the event.

- 4.33 Forewind will send the Community Consultees defined above, invitations to the public exhibitions with details of where to access the PEI. In addition, Forewind will advertise the public exhibitions and details about where to find the PEI through advertisements in local newspapers, posters in libraries, council offices and other public establishments, and by issuing information to local media outlets via press releases.
- 4.34 Members of the community outside the Consultation Area may want to be involved in the consultation process. Therefore, Forewind has selected a range of newspapers to advertise in, with distributions that extend beyond the Consultation Area. Information will also be available on the Forewind website www.forewind.co.uk/.

Other communication tools

- 4.35 A range of communication tools will be used to disseminate information and provide ways for consultees to contact Forewind. These are:
- **Website** – www.forewind.co.uk
 - **Points of contact** – freepost postal address, free phone telephone number and email address;
 - **Local media** – press releases and advertisements will be issued from time to time;
 - **Elected representative engagement;**
 - **Dogger Bank News** – the newsletter provides information on the zone-wide development. This will include progress on Dogger Bank Teesside as well as the other on goingzonal activities to give a fuller picture of all the work being undertaken by Forewind. It will be produced three times a year and will be sent electronically or by post to the Community Consultees and will be available at consultation events;
 - **Ongoing liaison with marine users** – marine users are welcome to attend the public exhibitions but there will also be a number of dedicated fisheries liaison activities, as defined in Forewind's Fisheries Liaison Plan; and
 - **Lodging of documents in public** – Forewind will lodge key consultation documents and Dogger Bank News at a number of Council libraries and other appropriate Council buildings, including the mobile library service during the consultation periods. The locations are listed in Table 2. Further copies will be made available on request.

Consideration of other promoters' consultation exercises

- 4.36 This community may be consulted by the promoters of other NSIPs. Where possible, Forewind will avoid scheduling consultation events that overlap with these other

consultation exercises. Currently the following NSIPs are listed on the Planning Inspectorate's website² for this area:

- Tees Refining Ltd - Teesside Generating Station and Harbour Facilities
- York Potash Limited – Yorkshire Potash Pipeline

4.37 Forewind is aware that National Grid Electricity Transmission may consult the community on the location of its new substation at an appropriate time in its development process.

²<http://infrastructure.planningportal.gov.uk/>

5 What we will do with the consultation

- 5.1 All consultation responses received by Forewind during the consultation periods will be recorded and considered alongside the development proposals. Forewind is required by the provisions of the Planning Act to show how it has considered responses to consultation in a consultation report, which will be submitted as part of the application to the National Infrastructure Directorate.
- 5.2 Responses received outside the consultation periods will be considered wherever possible.

6 Consultation summary

- 6.1 During the pre-application consultation process, the Forewind website will be updated with relevant information as it becomes available. The dedicated contact methods (telephone, post and e-mail) will be available throughout the consultation periods and post-application.
- 6.2 Liaising with the local media, proactively sending out press releases and reactively responding to media enquiries has begun and will continue during the consultation periods and beyond. During the consultation periods, public exhibitions, newsletters and factsheets will be used to update the local communities and mariners with information and progress on the project.

Summary of consultation activities in Phase One

- Make the SoCC available for inspection at Council Libraries and other appropriate Council buildings, and on the Forewind website;
- Publish a notice in local newspapers stating where and when the SoCC can be inspected and advertising the start of Phase One consultation and details of the public exhibitions;
- Send direct invitations to the public exhibitions to the community consultees;
- Public exhibitions;
- Publish PEI introducing the development and site selection work done to date;
- Topic specific factsheets (if necessary);
- Dogger Bank newsletter;
- Lodging of documents in public places;
- Engagement with local elected representatives;
- Local media briefings and press releases; and
- Ongoing liaison with marine users.

Summary of consultation activities in Phase Two

- Advertise the start of Phase Two consultation and the public exhibitions;
- Send direct invitations to the public exhibitions to the community consultees;
- Public exhibitions;
- Publish updated PEI covering the full detail of Dogger Bank Teesside;
- Topic specific factsheets (if necessary);
- Dogger Bank newsletter;
- Lodging of documents in public places;
- Local media briefings and press releases;
- Elected representative engagement; and
- Ongoing liaison with marine users.

7 Further information

- 7.1 For further information about Forewind or our plans for Dogger Bank Teesside, contact us at:

Post: Freepost RSLY-HKGK-HEBR
Forewind
Davidson House
Forbury Square
Reading,
RG1 3EU

e-mail: info@forewind.co.uk

Website: www.forewind.co.uk

Phone: 0800 975 5636

Appendix A: Statement of Community Consultation (SoCC)



Statement of Community Consultation published in accordance with Section 47(6) of the Planning Act 2008



Introduction

Forewind is publishing this Statement of Community Consultation (SoCC) for the proposed Dogger Bank Teesside Offshore Wind Development and its associated infrastructure. This Statement explains how we will consult with the local community including residents living within a specified distance of the project, the general public, community groups, local businesses, technical consultees and land owners, as well as others who work in or use the area, both offshore and onshore.

Pre-application consultation provides the main opportunity for the local community to be engaged with, and to help shape, the proposals so it is important that you let Forewind know if you have any comments or information about any part of the Dogger Bank Teesside proposal during this consultation process.

Forewind and the Dogger Bank Offshore Wind Farm Zone

Forewind is a consortium comprising four leading international energy companies which joined forces to successfully bid for the right to develop the Dogger Bank Offshore Wind Farm Zone as part of The Crown Estate's third round of UK offshore wind farm leasing (Round 3).

The Dogger Bank Zone is in the North Sea, located between 156 and 310 kilometres off the Teesside coast. It extends over an area of approximately 8,660 km² (approximately the same size as North Yorkshire) with its easternmost outer limit aligned to the UK continental shelf, as defined by the UK Hydrographic Office. The water depth ranges from 18 to 63 metres.

Forewind has committed to developing 9 Gigawatts (GW) of wind generation capacity at Dogger Bank but believes that the zone has the potential to accommodate approximately 13GW, which would make it capable of supplying up to 10% of the UK's electricity demand. To relieve the pressure on stakeholders and the supply chain, the zone will be developed in a series of up to 11 wind farms.

Dogger Bank Teesside is an offshore wind farm development with an installed capacity of up to 4.8GW, with the potential to generate almost 17 Terawatt Hours (TWh) of green power every year. That is equivalent to the

electricity used annually by approximately 3.6 million British homes. It will connect into the national grid at the existing Lackenby substation near Eston and potentially at one other new substation which is also expected to be located in Teesside. It will comprise up to four offshore wind farms, each with a maximum installed capacity of up to 1.2GW.

These four wind farms and their associated infrastructure will be presented together during consultation in order to clearly describe the largest possible scale of Dogger Bank Teesside to stakeholders, and to give them the opportunity to provide their comments on any or all of the project proposals as they feel appropriate.

At the end of the development phase, Forewind will either submit a single application for one wind farm development of up to 4.8GW or may submit up to four separate applications (with a combined total installed capacity of 4.8GW). This decision will be made and presented to stakeholders prior to the Phase Two consultation (described in more detail later in this document). It is Forewind's intention to include the associated offshore and onshore infrastructure for each offshore wind farm in each application.

Dogger Bank Teesside will comprise:

- Up to 1,600 offshore wind turbine generators (WTG) (the number of WTGs is dependent on the size of WTG selected, which could be from 3MW to 10MW);
- Alternating current (AC) cabling between the offshore wind turbine generators (inter-array cabling) and offshore platforms;
- Offshore collector stations and offshore AC to direct current (DC) converter stations including foundations and scour protection measures;
- Offshore operations and maintenance infrastructure including offshore accommodation;
- Permanent moorings, navigational buoys and scour protection measures;
- Offshore meteorological masts and metocean equipment;
- Offshore high voltage direct current (HVDC) export cable systems from the offshore AC to DC converter stations to the landfall on the UK coastline;
- Crossing structures at the points where the export and inter-array cables cross existing subsea cables and pipelines;
- Buried onshore cable joints at the landfall

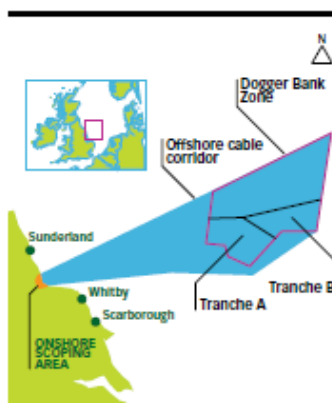


Figure 1
Location of Dogger Bank Teesside



where the offshore export cables come onshore and join the onshore cables;

- Underground onshore HVDC cable systems from the landfall to the onshore DC to AC converter stations;
- Up to four onshore DC to AC converter stations which could be up to 30m in height and will require a combined permanent land take of up to 18 hectares. The converter stations could be sited together or split over up to four sites. Additional land would be required on a temporary basis during construction; and
- Underground high voltage alternating current (HVAC) cables from the onshore converter stations to National Grid's substation(s).

Potential impacts

The development of Dogger Bank Teesside would be a major step towards achieving the Government's renewable energy targets and improving energy security for the UK. It will also generate local and national employment opportunities.

There will be some potentially negative impacts for the local community, but Forewind intends to minimise them wherever it is reasonably feasible. These impacts are expected to include (but are not restricted to) temporary noise and disruption during construction, permanent visual impacts resulting from the construction of the onshore converter stations, increased marine traffic during construction and operation and limits or exclusions on movement through the offshore wind farms. No new overhead lines are proposed as part of this development.

The consenting process

Offshore wind farms with a capacity of more than 100MW are classified as Nationally Significant Infrastructure Projects (NSIPs) under Section 14 of the Planning Act 2008 and require a Development Consent Order (DCO) before they can be built. The Planning Inspectorate is the Government agency responsible for examining applications for DCOs which authorise NSIPs. Therefore Forewind will submit an application for a DCO to the National Infrastructure Directorate of the Planning Inspectorate for examination.

For each application, the National Infrastructure Directorate will firstly decide whether or not the application should be accepted. If accepted, it will proceed to examine the application, and following the completion of the examination process will then recommend to the Secretary of State for Energy and Climate Change (SoS) whether or not the application should be approved. In deciding whether or not to approve the application, the SoS must have regard to the relevant National Policy Statements (NPSs), which set out the need for new energy infrastructure and the issues to be considered in determining an application. For this project the relevant NPSs are EN1 – Overarching Energy, EN3 – Renewable Energy Infrastructure, and EN5 – Electricity Networks. If the SoS approves the application, the DCO will be made, authorising the construction and operation of the wind farm. For more information about the National Infrastructure Directorate and National Infrastructure Planning, please refer to <http://infrastructure.planningportal.gov.uk>.

Consultation objectives

The objectives of the Dogger Bank Teesside community consultation process are to:

- Provide information to all sections of the local community in a clear and concise way;
- Create a process through which local people can comment on the formal proposals;
- Ensure that Forewind understands the views of the local community so that they can be considered during the development process; and
- Provide feedback on how community consultation has influenced the proposal.

What we will consult on and when

The consultation will be carried out in two formal phases:

Phase One – the site selection process to date (summer 2012)

During Phase One, Forewind will clearly explain the site selection work done to date, including the process to narrow down the locations of the offshore wind farms, landfall and converter station(s). Forewind will set out why the preferred locations have been selected and what further refinement is required. Forewind will ask the local community to provide any comments or information on the site selection work that Forewind should consider when choosing the precise locations for onshore and offshore elements of the project.

Public Exhibition Venues

Venue	Date (2012)	Time
Kirkleatham Museum Redcar, TS10 5NW	Thursday 24 May	2pm – 8pm
Redcar Central Library Kirkleatham Street, Redcar, TS10 1RT	Friday 25 May	11am – 5pm
Lazenby Village Hall High Street, Lazenby, TS6 8DU	Saturday 26 May	11am – 5pm

Consultation documents (the Preliminary Environmental Information) will also be available at the locations listed below, and on the Forewind website www.forewind.co.uk from 24 May 2012.

The SoCC and PEI will be available for inspection at:

Venue	Address	Post Code
Grangetown Library	171 Birchington Avenue, Middlesbrough	TS6 7LP
Kirkleatham Museum	Redcar	TS10 5NW
Laburnum Road Library	Laburnum Road, Redcar	TS10 3QS
Marske Library	Windy Hill Lane, Marske	TS11 7BL
Mobile Library	For details of routes and timetables, please refer to www.redcar-cleveland.gov.uk or call Redcar Central Library on 01642 472162 or the Mobile Library on 07909 906 324	
Redcar Central Library	Redcar and Cleveland House, Kirkleatham Street, Redcar	TS10 1RT
Roseberry Library	Roseberry Road, Redcar	TS10 4NY
Saltburn Library	Windsor Road, Saltburn-by-the-Sea	TS12 1AT
The Wilton Centre	Wilton, Redcar	TS10 4RF

This constitutes formal notice of the start of the Phase One Consultation. Consultation responses must reach Forewind by Friday 22 June 2012 to ensure that they are considered. However, Forewind will endeavour to consider any responses received outside this period, wherever possible.

Phase Two – the detailed proposals (anticipated to be in 2013)

During Phase Two, Forewind will ask the local community for comments on the detailed proposals for Dogger Bank Teesside. At this stage, Forewind will have gathered and assessed a comprehensive set of data and will be able to explain the potential impacts of the development and any proposed mitigation measures, which may include landscaping.

Prior to Phase Two, Forewind will inform the local community whether it will be submitting a single application for a DCO for the entirety of Dogger Bank Teesside, or whether separate applications will be submitted.

If separate applications are to be submitted, Forewind will explain how the consultation responses received will be applied to each application going forwards.

The exact dates and locations of the Phase Two consultation events have not yet been set but they will be published in the local press and marine journals, and on the Forewind website at least two weeks beforehand. Any response to consultation will need to reach Forewind before the consultation response deadline to ensure that it is considered. The period of the consultation and deadline for responses will be publicised when known.

Environmental Impact Assessment

Dogger Bank Teesside is a development which requires an Environmental Impact Assessment for the purposes of Schedule 2 to the Infrastructure Planning (Environmental Impact Assessment) Regulations 2009 and Forewind will compile the Preliminary Environmental Information (PEI) required to assess the environmental impacts of the project.

PEI will be available during both stages of consultation.

Who we will consult

This process (both phases) is designed to engage with the local communities, both onshore and offshore, which may be affected by Dogger Bank Teesside. The consultation area is shown in figure 2.

Forewind will send newsletters and direct invitations to the consultation events to the following people:

- Community groups or organisations with postal addresses in the consultation area, or who are active within the consultation area;
- Parish councils wholly or partly within the consultation area;
- District and county councillors with wards/divisions wholly or partly within the consultation area; and
- Members of UK and European Parliaments with local constituencies wholly or partly within the consultation area.

Anyone else who may be interested in the project is welcome to take part in the community consultation. Events will also be advertised in local newspapers, marine journals and on the Forewind website.

Forewind is engaging with the local, national and international fishing communities directly to ensure that they are up to date with the development proposals and are given the opportunity to provide comments. Details of this consultation process have been published separately in Forewind's Fisheries Liaison Plan. Members of the fishing community are also welcome to engage in the community consultation process.

Forewind will work with the National Infrastructure Directorate and the relevant UK and EU governments to ensure that appropriate international stakeholders are consulted.

The methods we will use to consult

Public exhibitions – Anyone with an interest in Dogger Bank Teesside is welcome to attend the public exhibitions. In addition to the information panels and printed materials, Forewind staff will be at the exhibitions to answer questions. Visitors will be asked to submit feedback and comments via questionnaires.

Newsletters and factsheets – Forewind will produce zone level newsletters and subject-specific factsheets at key stages of the project.

Lodging of consultation documents in public – All PEI documents, questionnaires, factsheets and newsletters will be lodged at Council libraries and other appropriate

Council buildings, as detailed. They will also be available to download from the Forewind website www.forewind.co.uk.

What we will do with responses to consultation

All responses received during consultation will be carefully considered. Details of any responses received during consultation and the account taken of those responses will be included in the consultation report.

This will be submitted with the application for a DCO to the National Infrastructure Directorate and will therefore be made public. For this reason, any responses to Forewind must not contain personal information about any third party without their consent. This is to ensure compliance with the Data Protection Act.

The Consultation Report will demonstrate how Forewind has complied with the consultation requirements of the Planning Act 2008 and will be considered by the National Infrastructure Directorate, both when determining whether to accept the application, and then in examining the application.

Other consultations

This community may be consulted by the promoters of other NSIPs. Where possible, Forewind will avoid scheduling consultation events that overlap with these other consultations. Currently the following NSIPs are listed on the Planning Inspectorate's website for this area:

- Tees Refining Ltd - Teesside Generating Station and Harbour Facilities
- York Potash Limited - Yorkshire Potash Pipeline

Forewind is aware that National Grid Electricity Transmission may also consult the community on the location of its new substation at an appropriate time in its development process.



Figure 2
Dogger Bank Teesside consultation area

How to get in touch with us or obtain more detailed information

Website	www.forewind.co.uk
Email	info@forewind.co.uk
Freephone	0800 975 5636
Post	Freeport RSLY-HKGG-HEBR Forewind Davidson House Forbury Square Reading RG1 3EU